

TS 8.2

LOUNGE

TWILIGHT™ SPAS

Experience head-to-toe relaxation with the newly redesigned TS 8.2. Roomy enough for six adults, this hot tub features thoughtful jet arrangements — including a full-size lounge and StressRelief Neck and Shoulder Seat, for recovery and rejuvenation. Premium water filtration, topside controls, and built-in WiFi offer a stress-less ownership experience.



Dimensions	94" x 94" x 38" (239 cm x 239 cm x 97 cm)
Weight: (Dry/Full)	1,065 lbs (483 kg) / 5,345 lbs (2,424 kg)
Water Capacity	380 Gallons (1,438 L)
Power Requirements	240 V / 50 Amp
Seating Capacity	6
Stainless Steel Jets	46
Pumps	2
Water Features	Waterfall
Water Care	EcoPur® Charge + Ozone
LED Lighting	Orion Light System™
Exclusive Features	StressRelief Neck and Shoulder Seat™ Master Force™ Bio-Magnetic Therapy System Master Blaster® Foot Massage Therapy Non-slip, Comfort Mat WiFi Module Deluxe Tapered Cover
Listing Number	5700



Made in the USA
with U.S. and imported parts

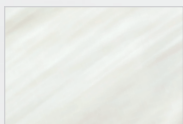
PREMIUM OPTIONS

- Master Clear Salt System
- QuietFlo Water Care System™
- Vac-Formed ABS Pan Bottom
- Fusion Air Sound System

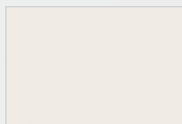
ACCESSORIES

- Hydraulic Cover Lift
- Manual Cover Lift
- Premium Spa Step
- Bluetooth Speaker

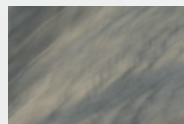
Shell Colors



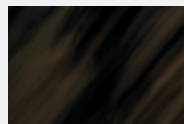
STERLING SILVER
MARBLE



WHITE



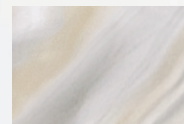
TUSCAN SUN



MIDNIGHT CANYON

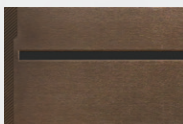


STORM CLOUD

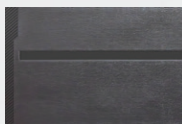


SMOKY MOUNTAIN

Skirting Colors | DuraMaster Premium™



DARK WALNUT



GRAPHITE



MIDNIGHT



MASTERSPAS®

MASTERSPAS.COM

TS 8.25

TWILIGHT™ SPAS

Where comfort meets quality. The newly redesigned TS 8.25 gives you the space you seek for relaxation and well-being. This seven-person hot tub features premium hydrotherapy jets, adjustable pillows, and ambient LED lighting. With a stress-less water care system and all weather cabinet, owning and caring for your hot tub is simple.



Dimensions	94" x 94" x 38" (239 cm x 239 cm x 97 cm)
Weight: (Dry/Full)	1,100 lbs (499 kg) / 5,690 lbs (2,581 kg)
Water Capacity	395 Gallons (1,495 L)
Power Requirements	240 V / 50 Amp
Seating Capacity	7
Stainless Steel Jets	43
Pumps	2
Water Features	Waterfall
Water Care	EcoPur® Charge + Ozone
LED Lighting	Orion Light System™
Exclusive Features	StressRelief Neck and Shoulder Seat™ Master Force™ Bio-Magnetic Therapy System Master Blaster® Foot Massage Therapy Non-slip, Comfort Mat WiFi Module Deluxe Tapered Cover
Listing Number	7700



Made in the USA
with U.S. and imported parts

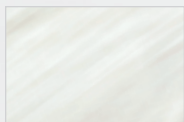
PREMIUM OPTIONS

- Master Clear Salt System
- QuietFlo Water Care System™
- Vac-Formed ABS Pan Bottom
- Fusion Air Sound System

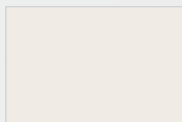
ACCESSORIES

- Hydraulic Cover Lift
- Manual Cover Lift
- Premium Spa Step
- Bluetooth Speaker

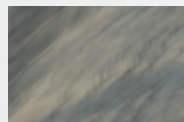
Shell Colors



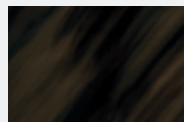
STERLING SILVER
MARBLE



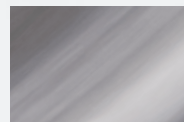
WHITE



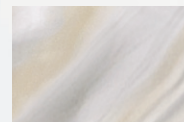
TUSCAN SUN



MIDNIGHT CANYON

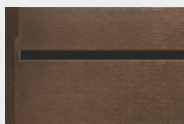


STORM CLOUD

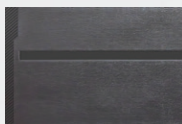


SMOKY MOUNTAIN

Skirting Colors | DuraMaster Premium™



DARK WALNUT



GRAPHITE



MIDNIGHT



MASTERSPAS®

MASTERSPAS.COM

TS 7.2

LOUNGE

TWILIGHT™ SPAS

The best-selling TS 7.2 just got better with an updated design and even more thoughtful details. From a full-size lounge to adjustable spa pillows, you will have room to stretch out or spend time with those you love most. The StressRelief Neck and Shoulder Seat targets an area where you feel tension most while a waterfall and LED lighting set the mood.



Dimensions	84" x 84" x 38" (214 cm x 214 cm x 97 cm)
Weight: (Dry/Full)	980 lbs (445 kg) / 4,635 lbs (2,102 kg)
Water Capacity	305 Gallons (1,155 L)
Power Requirements	240 V / 50 Amp
Seating Capacity	6
Stainless Steel Jets	38
Pumps	2
Water Features	Waterfall
Water Care	EcoPur® Charge + Ozone
LED Lighting	Orion Light System™
Exclusive Features	StressRelief Neck and Shoulder Seat™ Master Force™ Bio-Magnetic Therapy System Master Blaster® Foot Massage Therapy Non-slip, Comfort Mat WiFi Module Deluxe Tapered Cover
Listing Number	5500



Made in the USA
with U.S. and imported parts

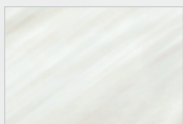
PREMIUM OPTIONS

- Master Clear Salt System
- QuietFlo Water Care System™
- Vac-Formed ABS Pan Bottom
- Fusion Air Sound System

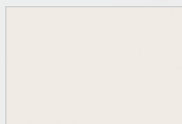
ACCESSORIES

- Hydraulic Cover Lift
- Manual Cover Lift
- Premium Spa Step
- Bluetooth Speaker

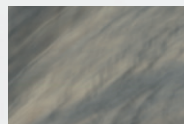
Shell Colors



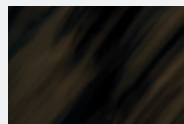
STERLING SILVER
MARBLE



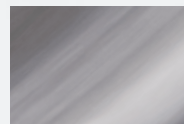
WHITE



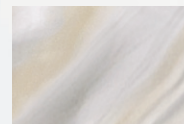
TUSCAN SUN



MIDNIGHT CANYON

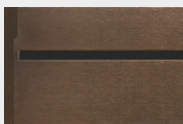


STORM CLOUD

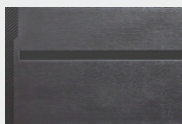


SMOKY MOUNTAIN

Skirting Colors | DuraMaster Premium™



DARK WALNUT



GRAPHITE



MIDNIGHT



MASTERSPAS®

MASTERSPAS.COM

TS 7.25

TWILIGHT™ SPAS

The modern approach to the ancient practice of hydrotherapy. The TS 7.25 features premium massage jets, which are thoughtfully placed to target high tension areas. From the StressRelief Neck and Shoulder Seat to the Master Blaster Foot Therapy, you'll feel relaxed and rejuvenated after every soak.



Dimensions	84" x 84" x 38" (214 cm x 214 cm x 97 cm)
Weight: (Dry/Full)	919 lbs (417 kg) / 4,760 lbs (2,159 kg)
Water Capacity	305 Gallons (1,155 L)
Power Requirements	240 V / 50 Amp
Seating Capacity	7
Stainless Steel Jets	37
Pumps	2
Water Features	Waterfall
Water Care	EcoPur® Charge + Ozone
LED Lighting	Orion Light System™
Exclusive Features	StressRelief Neck and Shoulder Seat™ Master Force™ Bio-Magnetic Therapy System Master Blaster® Foot Massage Therapy Non-slip, Comfort Mat WiFi Module Deluxe Tapered Cover
Listing Number	6400



Made in the USA
with U.S. and imported parts

PREMIUM OPTIONS

- Master Clear Salt System
- QuietFlo Water Care System™
- Vac-Formed ABS Pan Bottom
- Fusion Air Sound System

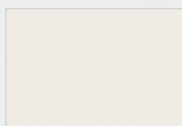
ACCESSORIES

- Hydraulic Cover Lift
- Manual Cover Lift
- Premium Spa Step
- Bluetooth Speaker

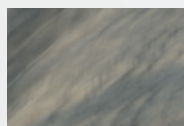
Shell Colors



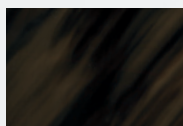
STERLING SILVER
MARBLE



WHITE



TUSCAN SUN



MIDNIGHT CANYON

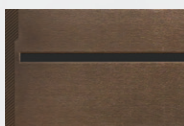


STORM CLOUD

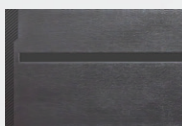


SMOKY MOUNTAIN

Skirting Colors | DuraMaster Premium™



DARK WALNUT



GRAPHITE



MIDNIGHT



MASTERSPAS®

MASTERSPAS.COM

TS 6.2

LOUNGE

TWILIGHT™ SPAS

Experience uncompromised wellness and unmatched relaxation with the all-new TS 6.2. This space-conscious hot tub features the latest hydrotherapy jets, ergonomic seating, and an energy-efficient design. With built-in Wi-Fi and advanced control system, dialing in your experience has never been easier.



Dimensions	78" x 78" x 34" (199 cm x 199 cm x 87 cm)
Weight: (Dry/Full)	755 lbs (342 kg) / 3,770 lbs (1,710 kg)
Water Capacity	250 Gallons (946 L)
Power Requirements	240 V / 50 Amp
Seating Capacity	5
Stainless Steel Jets	30
Pumps	2
Water Features	Waterfall
Water Care	EcoPur® Charge + Ozone
LED Lighting	Orion Light System™
Exclusive Features	StressRelief Neck and Shoulder Seat™ Master Force™ Bio-Magnetic Therapy System Master Blaster® Foot Massage Therapy WiFi Module Deluxe Tapered Cover
Listing Number	5300



Made in the USA
with U.S. and imported parts

PREMIUM OPTIONS

- Master Clear Salt System
- QuietFlo Water Care System™
- Vac-Formed ABS Pan Bottom
- Fusion Air Sound System

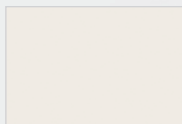
ACCESSORIES

- Manual Cover Lift
- Premium Spa Step
- Bluetooth Speaker

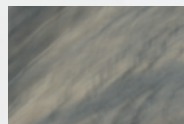
Shell Colors



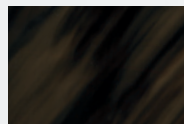
STERLING SILVER
MARBLE



WHITE



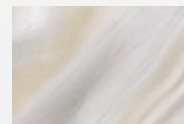
TUSCAN SUN



MIDNIGHT CANYON

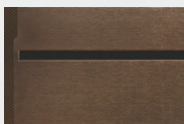


STORM CLOUD

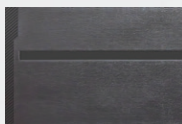


SMOKY MOUNTAIN

Skirting Colors | DuraMaster Premium™



DARK WALNUT



GRAPHITE



MIDNIGHT



MASTERSPAS®

MASTERSPAS.COM

TS 67.25

TWILIGHT™ SPAS

A space-spacing hot tub that is big on relaxation, the TS 67.25 offers the best in hydrotherapy. This five-person spa features premium massage jets, including the Master Blaster Foot Therapy, cascading waterfall, and brilliant LED lighting. The modern design and all-weather skirting will help you create your dream backyard oasis.



Dimensions	70" x 80" x 34" (178 cm x 214 cm x 87 cm)
Weight: (Dry/Full)	809 lbs (367 kg) / 3,740 lbs (1,696 kg)
Water Capacity	240 Gallons (908 L)
Power Requirements	240 V / 50 Amp
Seating Capacity	5
Stainless Steel Jets	28
Pumps	2
Water Features	Waterfall
Water Care	EcoPur® Charge + Ozone
LED Lighting	Orion Light System™
Exclusive Features	StressRelief Neck and Shoulder Seat™ Master Force™ Bio-Magnetic Therapy System Master Blaster® Foot Massage Therapy WiFi Module Deluxe Tapered Cover
Listing Number	8000



Made in the USA
with U.S. and imported parts

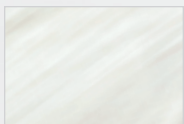
PREMIUM OPTIONS

- Master Clear Salt System
- QuietFlo Water Care System™
- Fusion Air Sound System

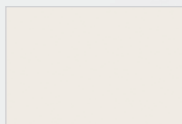
ACCESSORIES

- Manual Cover Lift
- Premium Spa Step
- Bluetooth Speaker

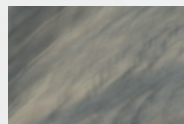
Shell Colors



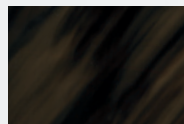
STERLING SILVER
MARBLE



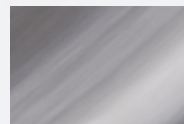
WHITE



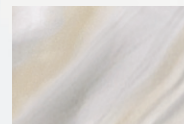
TUSCAN SUN



MIDNIGHT CANYON

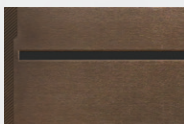


STORM CLOUD

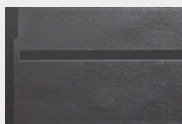


SMOKY MOUNTAIN

Skirting Colors | DuraMaster Premium™



DARK WALNUT



GRAPHITE



MIDNIGHT



MASTERSPAS®

MASTERSPAS.COM

TS 240X

LOUNGE

TWILIGHT™ SPAS

Maximize your backyard relaxation with the updated TS 240X. Strategically designed to offer the best in hydrotherapy while seamlessly integrating into your space, this corner hot tub features seating for up to three adults. Premium massage jets, including the Master Blaster foot jet, adjustable spa pillows, and beautiful lighting create a soothing experience.



Dimensions	78" x 78" x 34" (199 cm x 199 cm x 87 cm)
Weight: (Dry/Full)	715 lbs (324 kg) / 2,980 lbs (1,352 kg)
Water Capacity	205 Gallons (776 L)
Power Requirements	240 V / 50 Amp
Seating Capacity	3
Stainless Steel Jets	26
Pumps	2
Water Features	Waterfall
Water Care	EcoPur® Charge + Ozone
LED Lighting	Orion Light System™
Exclusive Features	StressRelief Neck and Shoulder Seat™ Master Force™ Bio-Magnetic Therapy System Master Blaster® Foot Massage Therapy WiFi Module Deluxe Tapered Cover
Listing Number	9967



Made in the USA
with U.S. and imported parts

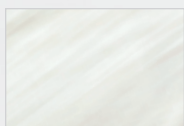
PREMIUM OPTIONS

- QuietFlo Water Care System™
- Fusion Air Sound System

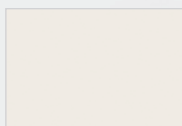
ACCESSORIES

- Premium Spa Step
- Bluetooth Speaker

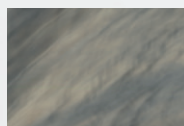
Shell Colors



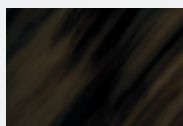
STERLING SILVER
MARBLE



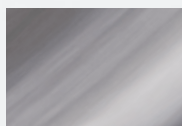
WHITE



TUSCAN SUN



MIDNIGHT CANYON

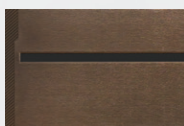


STORM CLOUD

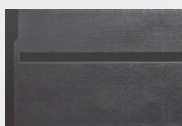


SMOKY MOUNTAIN

Skirting Colors | DuraMaster Premium™



DARK WALNUT



GRAPHITE



MIDNIGHT



MASTERSPAS®

MASTERSPAS.COM